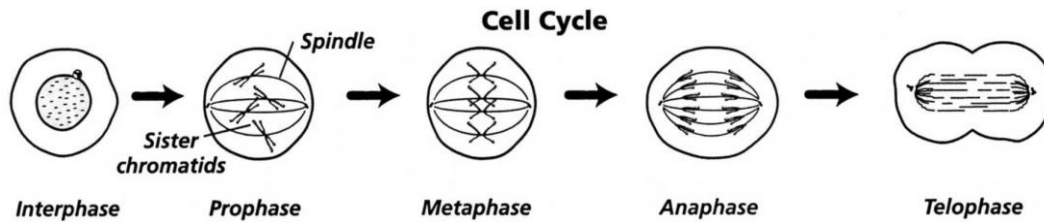


Mitosis Worksheet & Diagram Identification



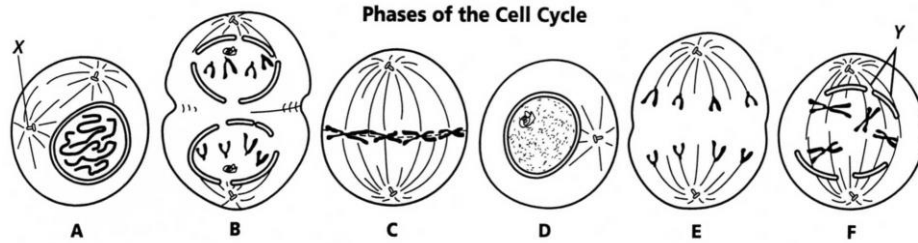
1. Chromosomes move to the middle of the spindle during what phase? _____
2. What are sister chromatids? When do they separate? _____

3. During which phase do chromosomes first become visible? _____
4. In multicellular organisms, the cell cycle produces groups of cells that perform the same function. What are these groups of cells called? _____

Complete the table by checking the correct column for each statement.

Statement	Interphase	Mitosis
5. Cell growth occurs		
6. Nuclear division occurs		
7. Chromosomes are distributed equally to daughter cells.		
8. Protein production is high		
9. Chromosomes are duplicated		
10. DNA synthesis occurs		
11. Cytoplasm divides immediately after this period		
12. Mitochondria and other organelles are made.		

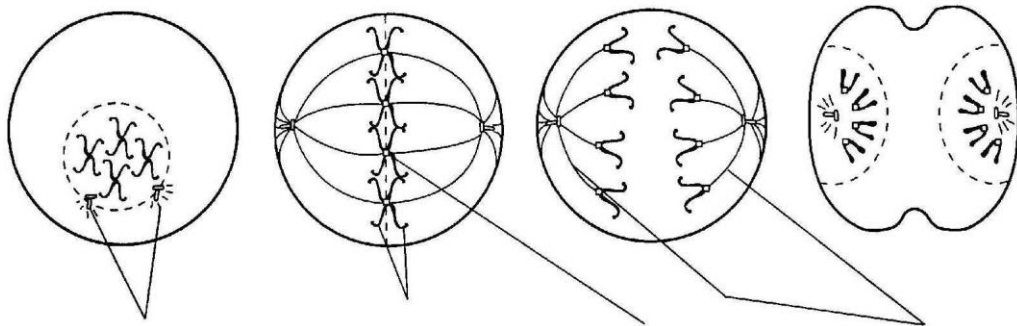
The following are not in the correct order. Please answer the questions below.



13. Which cell is in metaphase? _____
14. Cells A and F show an early and late stage of the same phase of mitosis. What phase is it? _____
15. In cell A, what is the structure labeled X? _____
16. In cell F, what is the structure labeled Y? _____
17. Which cell is not in a phase of mitosis? _____
18. What two main changes are taking place in cell B? _____
19. Sequence the six diagrams in order from first to last. _____
20. What is the end product of mitosis? _____
21. What is the main difference between cytokinesis in plants and animals? _____

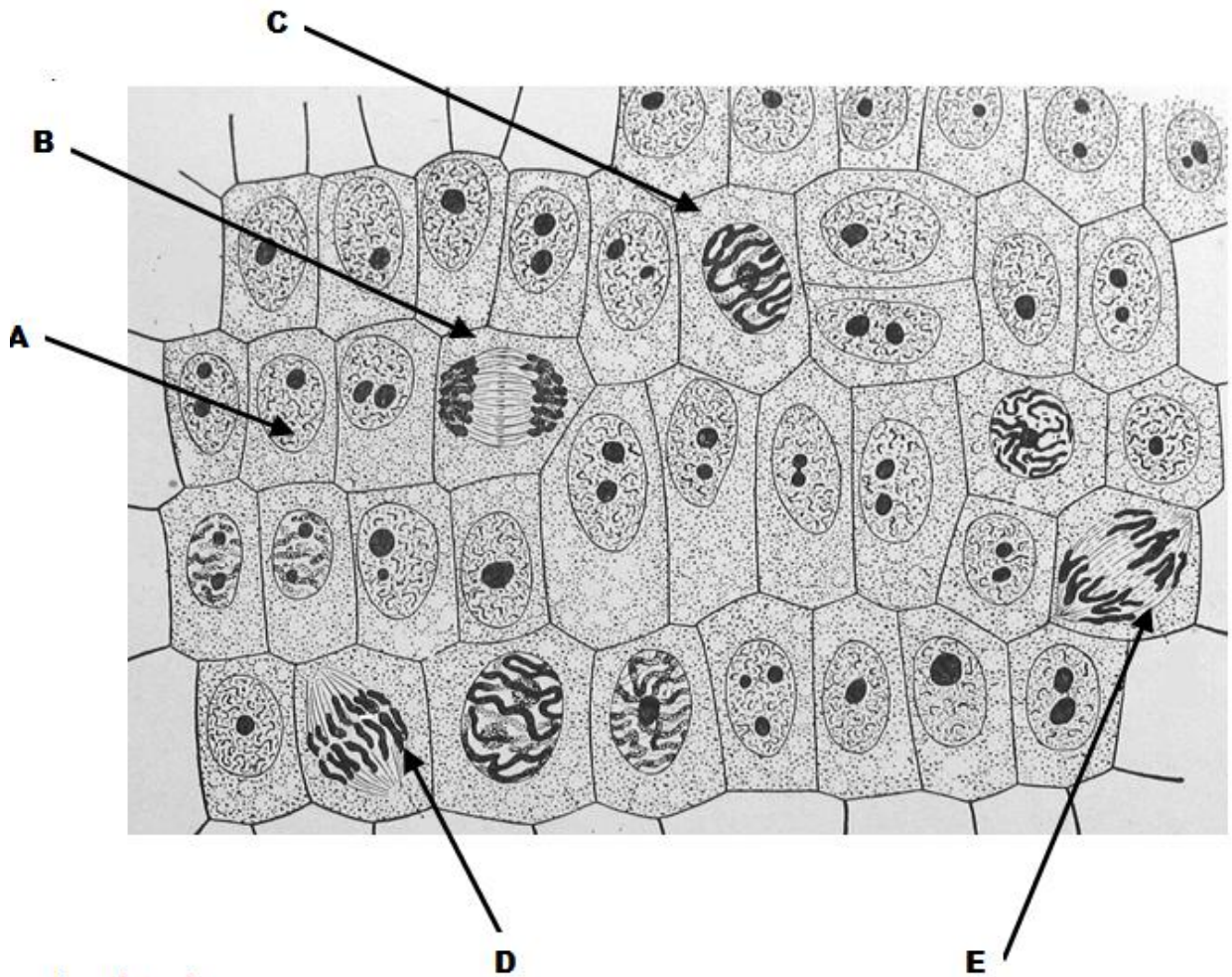
Identify the following phases of mitosis. Use these choices: telophase, metaphase, anaphase, prophase. Then label the diagrams. Use these choices: sister chromatids, centromere, spindle fibers, centrioles.

22. _____ 23. _____ 24. _____ 25. _____



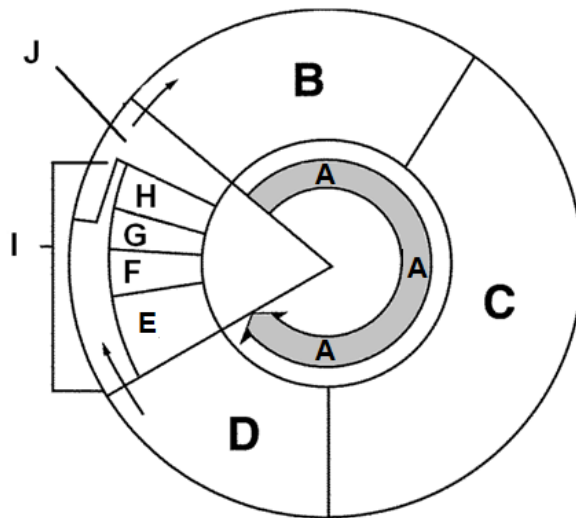
26. _____ 27. _____ 28. _____ 29. _____

Identify which stage of mitosis each lettered plant cell is in:



- A _____
- B _____
- C _____
- D _____
- E _____

Mitosis Worksheet & Diagram Identification



Label the parts of the cell cycle diagram and briefly describe what is happening:

A	
B	
C	
D	
E	
F	
G	
H	
I	
J	

The Cell Cycle (Phases are in order)